



PORT OF LONDON
AUTHORITY

Port of London Authority
Chart Correction Advice
Date: 18th October 2016



CCA No: 2016/29

Chart: Woolwich Reach (Upper)

PLA Chart No. 322 & 323

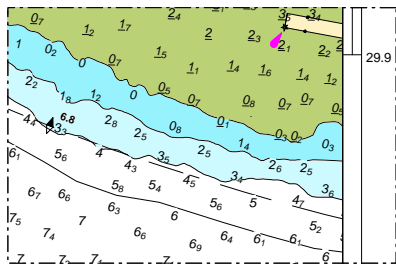
HO Ref No. 113-322-336

HO Ref No. 113-323-202

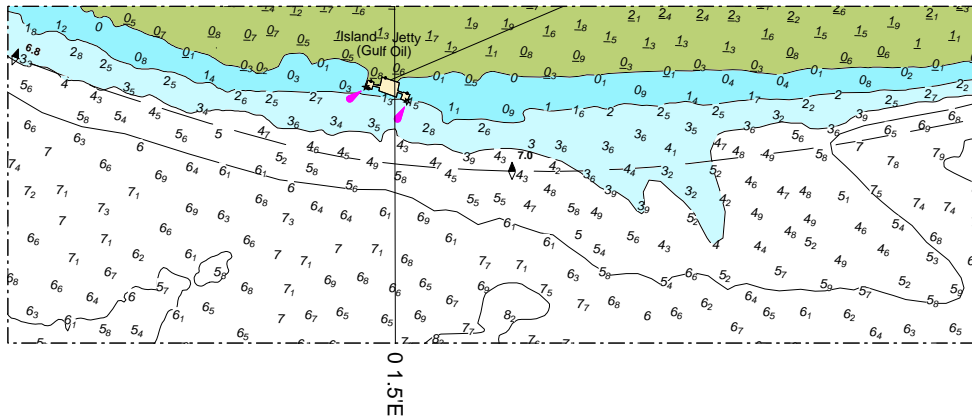
Previous Chart Correction: MS322 - 2016/15, MS323 - 2015/27

The accompanying block correction shows revised depths over Hookness Shoal from surveys carried out since February 2015.

322



323



For further information see the PLA hydrographic service website:

<http://www.pla.co.uk/Safety/PLA-Hydrographic-Service-Published-Surveys>