



PORT OF LONDON
AUTHORITY

Port of London Authority
Chart Correction Advice
Date: 12th October 2016

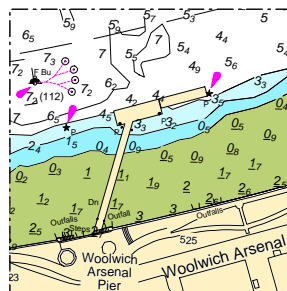


CCA No: 2016/28

Chart: Woolwich Reach

PLA Chart No. 324
HO Ref No. 113-324-085
Previous Chart Correction: 2015/1

The accompanying block correction shows that a pontoon extension to Woolwich Arsenal Pier has been put in position.



For further information see the PLA hydrographic service website:

<http://www.pla.co.uk/Safety/PLA-Hydrographic-Service-Published-Surveys>