



PORT OF LONDON
AUTHORITY

Port of London Authority
Chart Correction Advice
Date: 20th July 2016



CCA No: 2016/19

Chart: Upper Pool

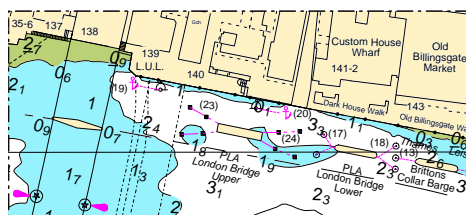
PLA Chart No. 317 / 318

HO Ref No. 113-317-130

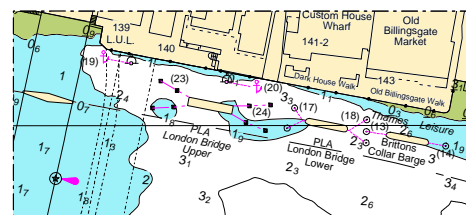
HO Ref No. 113-318-266

Previous Chart Correction: MS317 n/a, MS318 2016/13

The accompanying block correction shows a new mooring numbered (23) & (24) named "PLA London Bridge Upper" has been laid below London Bridge with four sinkers at either end. The adjacent mooring numbered (17) & (18) has been renamed "PLA London Bridge Lower".



MS 317



MS 318

For further information see the PLA hydrographic service website:

<http://www.pla.co.uk/Safety/PLA-Hydrographic-Service-Published-Surveys>