



PORT OF LONDON
AUTHORITY

Port of London Authority
Chart Correction Advice
Date: 25th April 2016



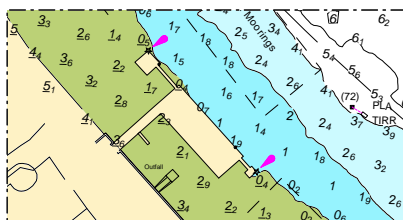
CCA No: 2016/15

Chart: Greenwich Reach

PLA Chart No. 322
HO Ref No. 113-322-336

Previous Chart Correction: Edition Date: September 2015, Edition Version: (3)

The accompanying block correction shows the outline of a new outfall constructed behind the jetty on the eastern side of Greenwich Peninsula.



For further information see the PLA hydrographic service website:

<http://www.pla.co.uk/Safety/PLA-Hydrographic-Service-Published-Surveys>