



PORT OF LONDON
AUTHORITY

Port of London Authority
Chart Correction Advice
Date: 25th April 2016

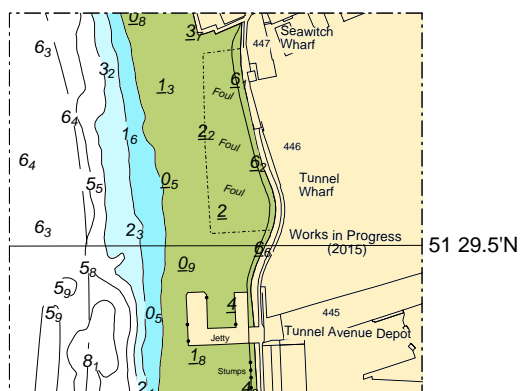


CCA No: 2016/14

Chart: Blackwall Reach

PLA Chart No. 321
HO Ref No. 113-321-190
Previous Chart Correction: 2016/10

The accompanying block correction shows the area of Tunnel Wharf jetty demolished in 2010 marked as "Foul" due to continued existing debris.



For further information see the PLA hydrographic service website:

<http://www.pla.co.uk/Safety/PLA-Hydrographic-Service-Published-Surveys>