



PORT OF LONDON  
AUTHORITY

Port of London Authority  
Chart Correction Advice  
Date: 18th April 2016



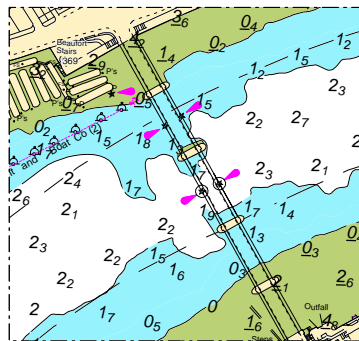
**CCA No: 2016/12**

Chart: Battersea Reach

PLA Chart No. 314  
HO Ref No. 113-314-088

Previous Chart Correction: Edition Date: December 2015; Edition Version: (3)

The accompanying block correction shows shallowing on Battersea Shoal with a depth of 1.5 metres recorded inside the southern edge of the navigation channel just upriver from Battersea Bridge.



For further information see the PLA hydrographic service website:

<http://www.pla.co.uk/Safety/PLA-Hydrographic-Service-Published-Surveys>