



PORT OF LONDON  
AUTHORITY

# Port of London Authority Chart Correction Advice Date: 10th March 2015



## CCA No: 2015/6

Chart: Long Reach

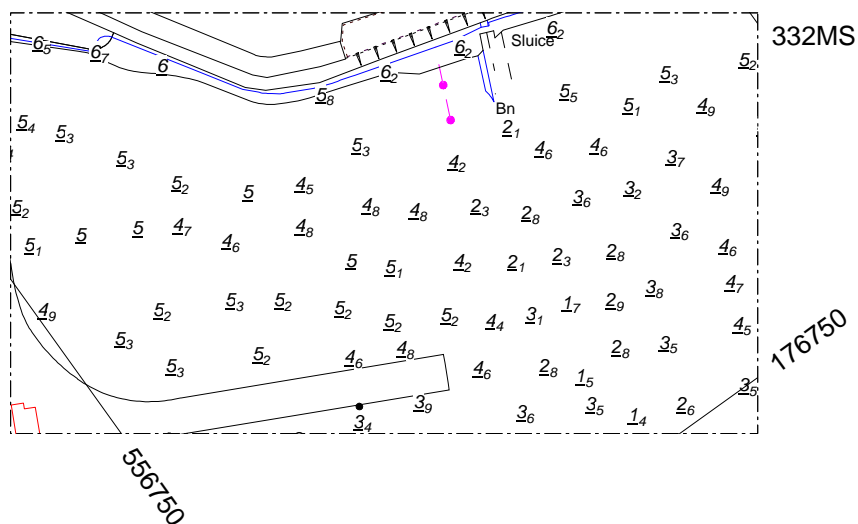
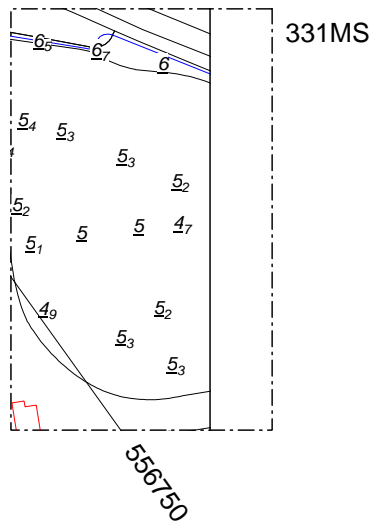
PLA Chart No. 331 & 332

HO Ref No. 113-331-268

HO Ref No. 113-332-162

Previous Chart Correction: 331MS & 332MS 2014/35

The accompanying block correction shows new soundings within the drying area on the inside of Jurgens Jetty, Purfleet just upriver from the QEII bridge.



For further information see the PLA hydrographic service website: [www.pla.co.uk/hydrohomepage](http://www.pla.co.uk/hydrohomepage)