



PORT OF LONDON
AUTHORITY

Port of London Authority
Chart Correction Advice
Date: 26th Nov 2015

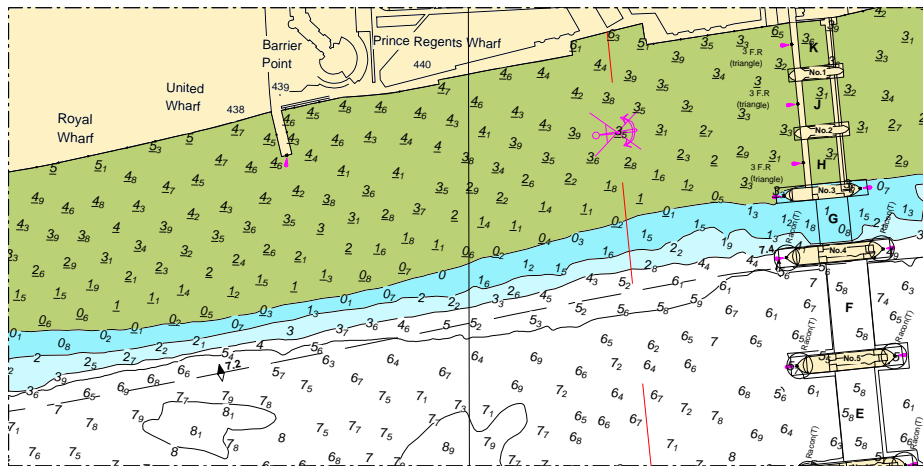


CCA No: 2015/27

Chart: Woolwich Reach

PLA Chart No. 323
HO Ref No. 113-323-202
Previous Chart Correction: 2014/24

The accompanying block correction shows depths within the channel above the F - span of the Thames Barrier are shoaler than indicated on PLA main survey chart 323.



For further information see the PLA hydrographic service website:

<http://www.pla.co.uk/Safety/PLA-Hydrographic-Service-Published-Surveys>