



PORT OF LONDON
AUTHORITY

Port of London Authority Chart Correction Advice Date: 20th Nov 2015

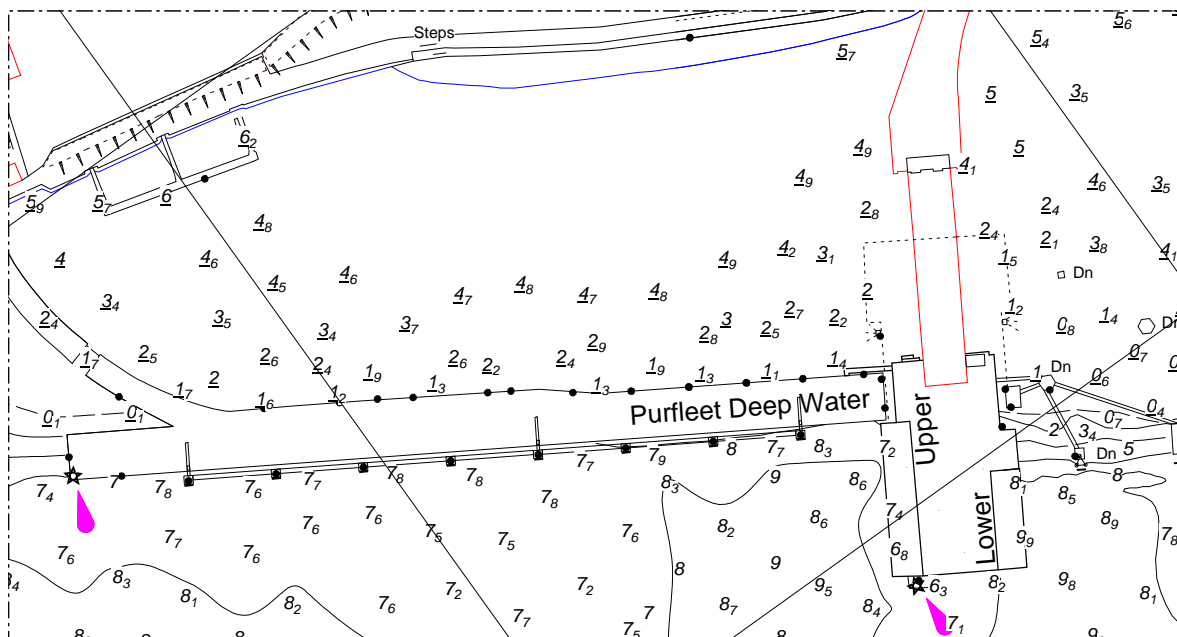


CCA No: 2015/26

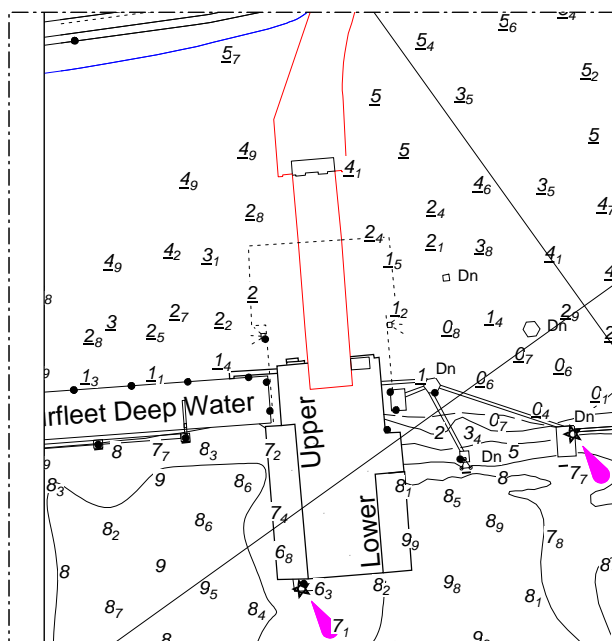
Chart: Long Reach

PLA Chart No. 331/332
HO Ref No. 113-331-268
HO Ref No. 113-332-132
Previous Chart Correction: 2015/6

The accompanying block correction shows pontoon, dolphin, brow and ladder configuration changes at the CRO Purfleet jetty. New walkway and pontoon at the Upper Inner jetty and a gap in the jetty at the upper end.



331MS



332MS

For further information see the PLA hydrographic service website:

<http://www.pla.co.uk/Safety/PLA-Hydrographic-Service-Published-Surveys>