



PORT OF LONDON
AUTHORITY

Port of London Authority
Chart Correction Advice
Date: 28th October 2015



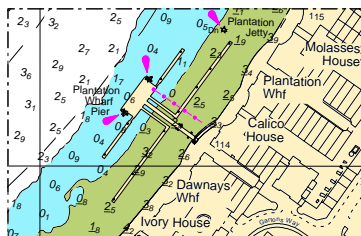
CCA No: 2015/24

Chart: Wandsworth Reach

PLA Chart No. 313
HO Ref No. 113-313-040
Previous Chart Correction: 2015/23

The accompanying block correction shows that a new jetty has been constructed at Plantation Wharf in Wandsworth.

NB. Topography and depth information has been updated.



For further information see the PLA hydrographic service website:

<http://www.pla.co.uk/Safety/PLA-Hydrographic-Service-Published-Surveys>