



PORT OF LONDON
AUTHORITY

Port of London Authority
Chart Correction Advice
Date: 9th Oct 2015



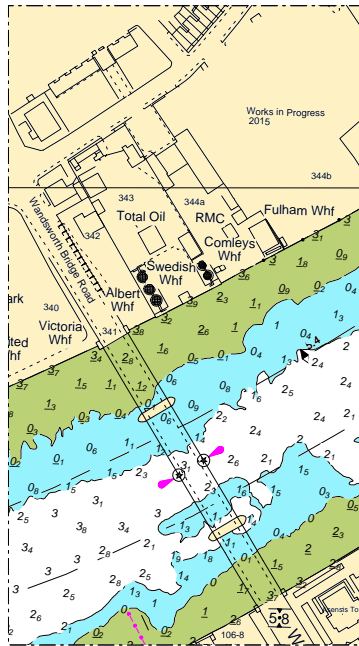
CCA No: 2015/23

Chart: Wandsworth Reach

PLA Chart No. 313
HO Ref No. 113-313-040

Previous Chart Correction: New Edition August 2015, Version No.3

The accompanying block correction shows that following a periodic survey the drying depth at Comleys Wharf has been revised from -2.8 to -3.6 metres.



For further information see the PLA hydrographic service website:

<http://www.pla.co.uk/Safety/PLA-Hydrographic-Service-Published-Surveys>