



PORT OF LONDON
AUTHORITY

Port of London Authority
Chart Correction Advice
Date: 5th October 2015

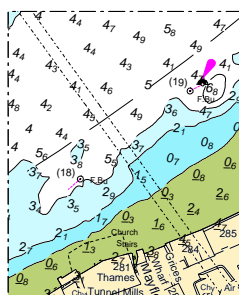


CCA No: 2015/22

Chart: Lower Pool

PLA Chart No. 319
HO Ref No. 113-319-130
Previous Chart Correction: none

The accompanying block correction shows the two separate Hop Pole moorings. Downstream mooring No.19 is marked by a buoy whilst upstream mooring No.18 is no longer there although the screw possibly remains.



For further information see the PLA hydrographic service website:

<http://www.pla.co.uk/Safety/PLA-Hydrographic-Service-Published-Surveys>