



PORT OF LONDON
AUTHORITY

Port of London Authority
Chart Correction Advice
Date: 2nd September 2015

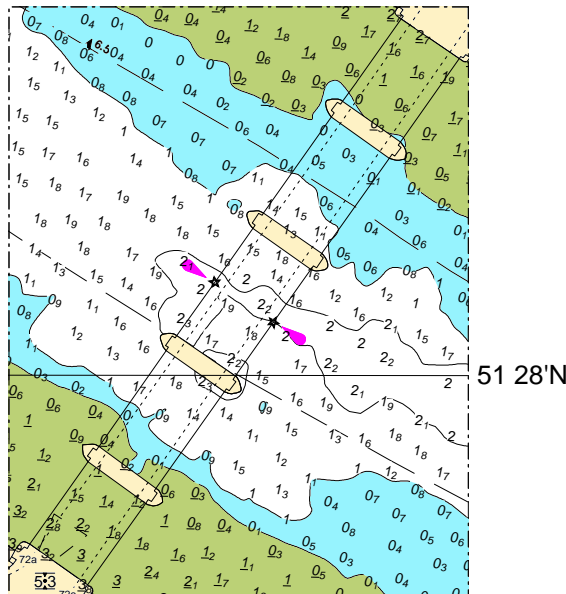


CCA No: 2015/18

Chart: Wandsworth Reach

PLA Chart No. 312
HO Ref No. 113-312-017
Previous Chart Correction: none

The accompanying block correction shows numbers 2 and 4 arches at Putney Bridge are no longer 'working arches'. The navigation lights have been removed from both sides of the bridge. Number 3 arch remains the only working arch.



For further information see the PLA hydrographic service website:

<http://www.pla.co.uk/Safety/PLA-Hydrographic-Service-Published-Surveys>