



PORT OF LONDON
AUTHORITY

Port of London Authority Chart Correction Advice Date: 12th June 2015



CCA No: 2015/14

Chart: Barking Reach

PLA Chart No. 325

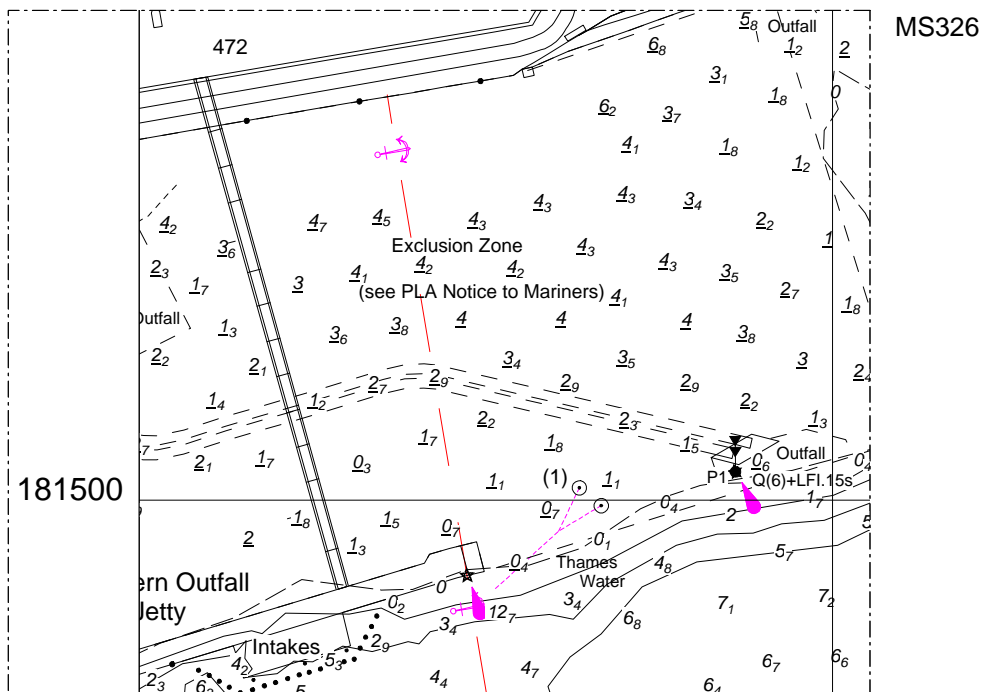
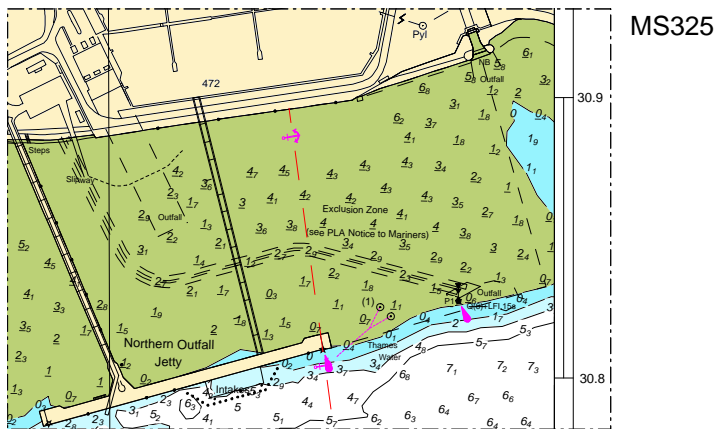
PLA Chart No. 326

HO Ref No. 113-325-228

HO Ref No. 113-326-209

Previous Chart Correction: MS325 2015/1; MS326 2015/3

The accompanying block correction shows Beckton Outfall with a navigation beacon marking the seaward end. The light characteristics are Q(6)+LFI.15s.



For further information see the PLA hydrographic service website:

<http://www.pla.co.uk/Safety/PLA-Hydrographic-Service-Published-Surveys>