



PORT OF LONDON  
AUTHORITY

Port of London Authority  
Chart Correction Advice  
Date: 12th Jan 2015



**CCA No: 2015/1**

Chart: Woolwich Reach

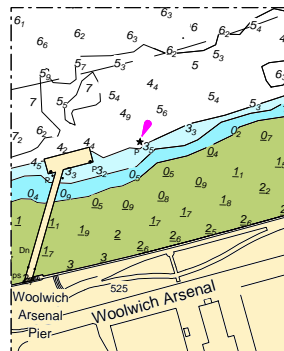
PLA Chart No. 324/325

HO Ref No. 113-324-085

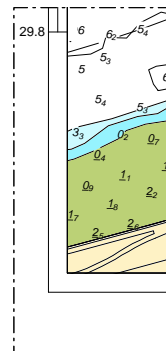
HO Ref No. 113-325-228

Previous Chart Correction: 324 - 2014/24 & 325 - 2014/6

The accompanying block correction shows that East Woolwich Ship Tier Middle moorings numbers (113) & (114) and all 8 screws have been permanently removed from the river.



PLA MS 324



PLA MS 325

For further information see the PLA hydrographic service website: [www.pla.co.uk/hydrohomepage](http://www.pla.co.uk/hydrohomepage)