



PORT OF LONDON
AUTHORITY

Port of London Authority
Chart Correction Advice
Date: 7th March 2014



CCA No: 2014/6

Chart: Woolwich Reach

PLA Chart No. 324 /325

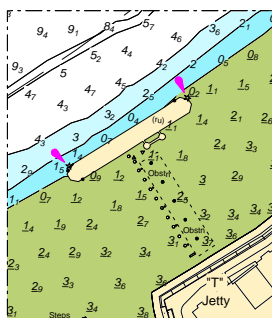
HO Ref No. 113-324-085

HO Ref No. 113-325-228

Previous Chart Correction: 324 - 2013/74

325 - 2013/14

The accompanying block correction shows the remains of East Woolwich Arsenal Pier.
NB. Piles on the downriver side of the pier marked "Obstn" are awash at high water.



For further information see the PLA hydrographic service website: www.pla.co.uk/hydrohomepage