



PORT OF LONDON  
AUTHORITY

Port of London Authority  
Chart Correction Advice  
Date: 25th Nov 2014



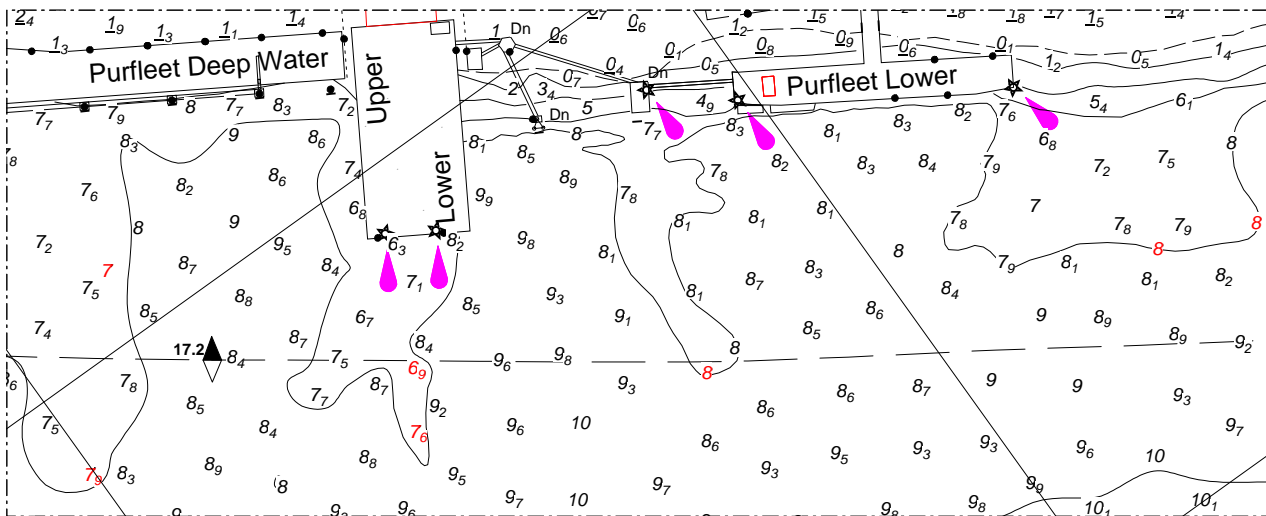
**CCA No: 2014/35**

Chart: Long Reach

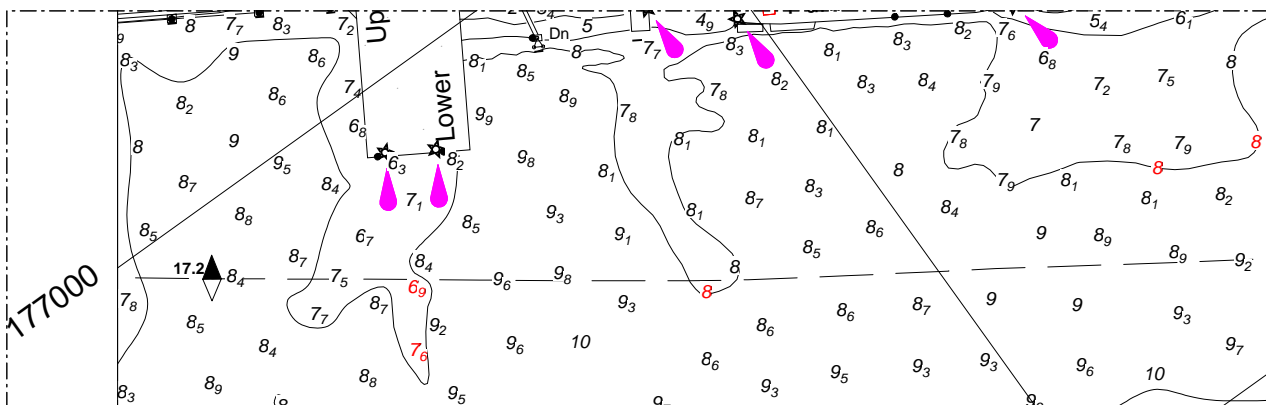
PLA Chart No. 331/332  
HO Ref No. 113-331-268  
HO Ref No. 113-332-162  
Previous Chart Correction: none

The accompanying block corrections show that shoal depths (red) on Purfleet sandwave area in the channel and approach to Purfleet Ro-Ro- Upper and Lower are shoaler than charted on PLA Main Surveys 331 and 332.

MS 331



MS 332



For further information see the PLA hydrographic service website: [www.pla.co.uk/hydrohomepage](http://www.pla.co.uk/hydrohomepage)