



PORT OF LONDON
AUTHORITY

Port of London Authority
Chart Correction Advice
Date: 3rd Nov 2014



CCA No: 2014/31

Chart: Sea Reach

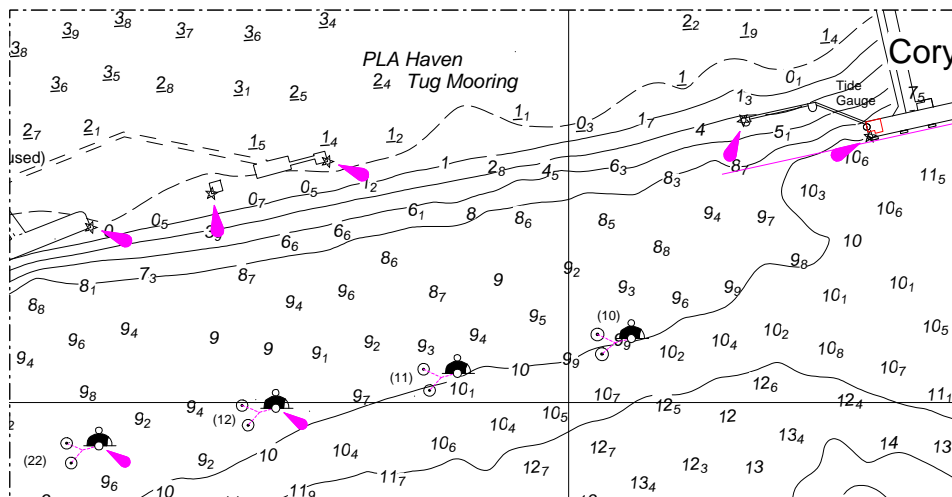
PLA Chart No. 340 / 341
HO Ref No. 113-340-184
HO Ref No. 113-341-572

Previous Chart Correction: MS340 2014/15 and MS341 2014/22

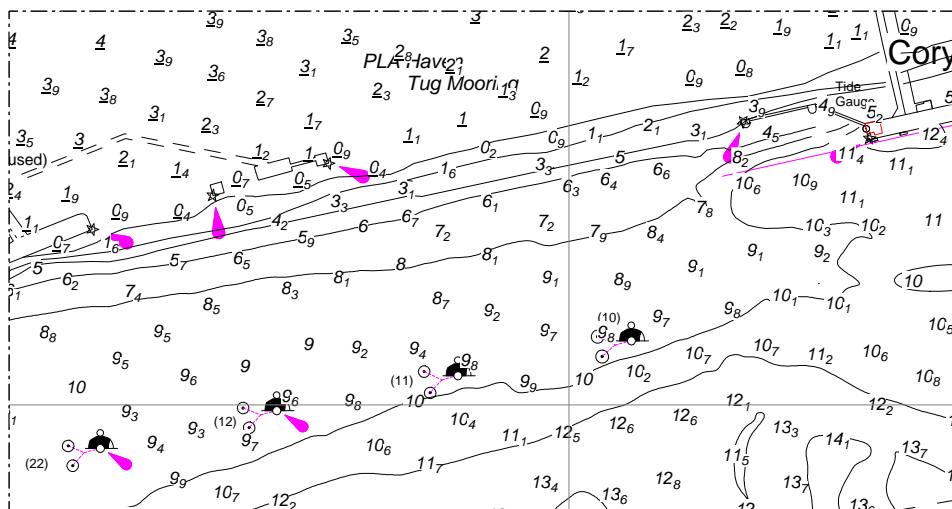
The accompanying block correction shows a new screw mooring has been installed off Shell Haven down river from the existing 3 tug moorings. The mooring is numbered (10) and the buoy is unlit.

Inner Screw Mooring position: 575019N / 181545E OSGB
Outer Screw Mooring position: 575022N / 181532E OSGB

MS340



MS341



For further information see the PLA hydrographic service website: www.pla.co.uk/hydrohomepage