



PORT OF LONDON  
AUTHORITY

# Port of London Authority Chart Correction Advice Date: 19th Nov 2013

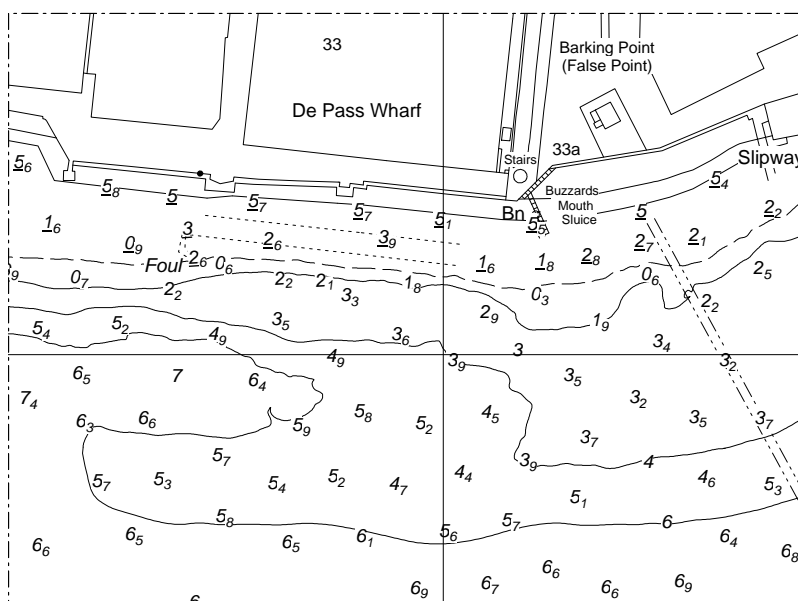


## CCA No: 2013/77

Chart: Barking Reach

PLA Chart No. 326  
HO Ref No. 113-326-029  
Previous Chart Correction: 2013/44

The accompanying block correction shows the removal of the jetty at De Pass Wharf and identifies a submerged hazard at the upriver end of the old jetty position.



For further information see the PLA hydrographic service website: [www.pla.co.uk/hydrohomepage](http://www.pla.co.uk/hydrohomepage)