



PORT OF LONDON
AUTHORITY

Port of London Authority
Chart Correction Advice
Date: 14 Oct 2013

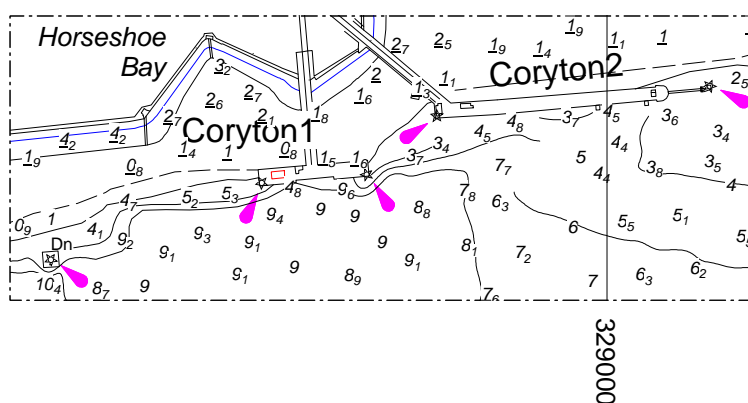


CCA No: 2013/72

Chart: Sea Reach

PLA Chart No. 341
HO Ref No. 113-341-500

The accompanying block correction shows that mooring buoys Nos.46 and 48 off Coryton 1 jetty have been removed from the river.



For further information see the PLA hydrographic service website: www.pla.co.uk/hydrohomepage