



PORT OF LONDON
AUTHORITY

Port of London Authority Chart Correction Advice Date: 31 July 2013

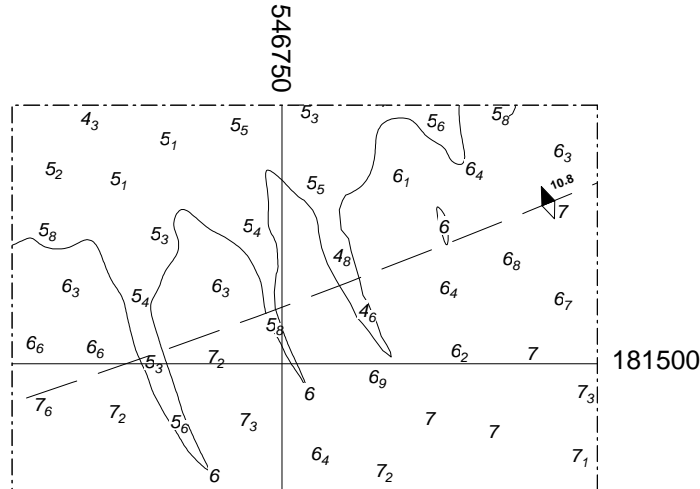


CCA No: 2013/44

Chart: Barking Reach

PLA Chart No. 326
HO Ref No. 113-326-209

The accompanying block correction shows shallower depths on Barking Shoal from a survey carried out in June 2013.



For further information see the PLA hydrographic service website: www.pla.co.uk/hydrohomepage