



PORT OF LONDON
AUTHORITY

Port of London Authority
Chart Correction Advice
Date: 28 June 2013

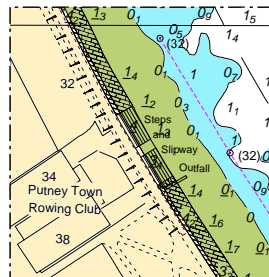


CCA No: 2013/28

Chart: Mortlake Reach

PLA Chart No. 308
HO Ref No. 113-308-011

The accompanying block correction shows a newly constructed slipway and steps directly outside Putney Town Rowing Club.



For further information see the PLA hydrographic service website: www.pla.co.uk/hydrohomepage