



PORT OF LONDON
AUTHORITY

Port of London Authority
Chart Correction Advice
Date: 06 June 2013

CCA No: 2013/18

Chart: Sea Reach

PLA Chart No. 340
HO Ref No. 113-340-139

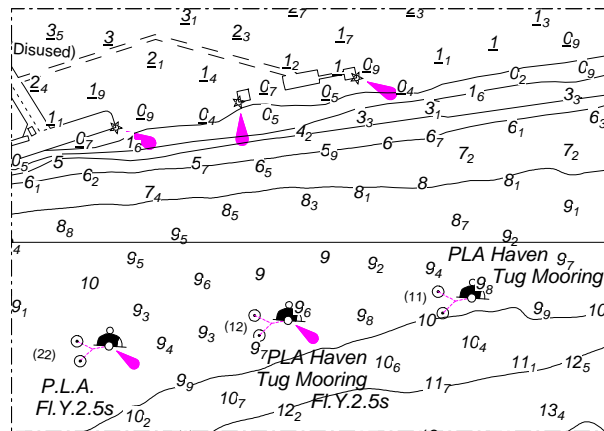
PLA Chart No. 341
HO Ref No. 113-341-500

The accompanying block correction shows two new screw moorings installed at Shellhaven. Each mooring has two screws placed in approximately the following positions:

PLA Haven Tug Mooring (11) - 181522E / 574904N and 181508E / 574908N

PLA Haven Tug Mooring (12) - 181498E / 574784N and 181484E / 574788N

NB. PLA Haven Tug Mooring (12) is also fitted with a navigation light Fl.Y.2.5s



Port Hydrographer

For further information see the PLA hydrographic service website: www.pla.co.uk/hydrohomepage