



PORT OF LONDON
AUTHORITY

Port of London Authority
Chart Correction Advice
Date: 06 June 2013

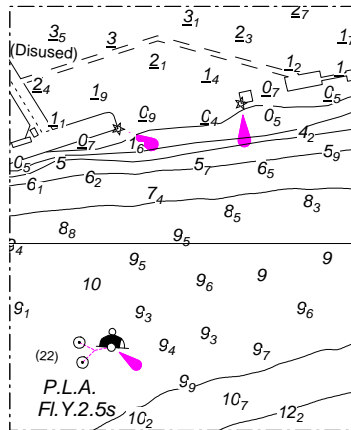
CCA No: 2013/17

Chart: Sea Reach

PLA Chart No. 340
HO Ref No. 113-340-139

PLA Chart No. 341
HO Ref No. 113-341-500

The accompanying block correction shows that navigation buoy "Works" has been removed from the river at Shellhaven as per Notice to Mariners No. L10 of 2013.



Port Hydrographer