



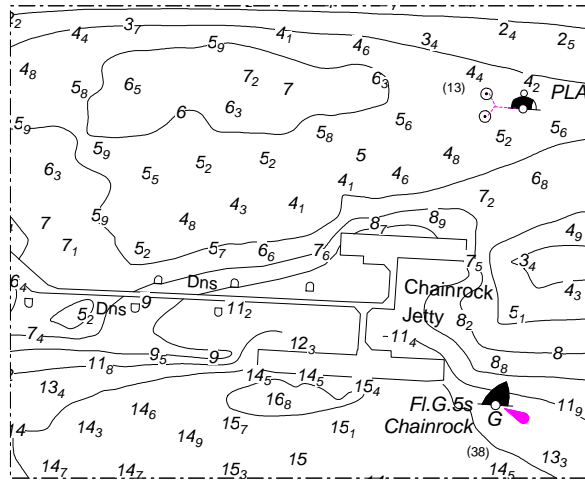
PORT OF LONDON
AUTHORITY

Port of London Authority
Chart Correction Advice
Date: 05 June 2013

Chart: Sea Reach
PLA Chart No. 341
HO Ref No. 113-341-500

CCA No: 2013/16

The accompanying block correction shows the Coryton Tug Moorings numbers 11 and 12 inside Chainrock Jetty at Holehaven Creek have been pulled and removed from the river.



Port Hydrographer

For further information see the PLA hydrographic service website: www.pla.co.uk/hydrohomepage