

Referencing a Geotiff in AutoDesk Products:

There are many different AutoDesk products that can take in Geotiff formats in different ways. Below are solutions for AutoCAD Civil 3D and normal AutoCAD for any others please refer to the AutoDesk website.

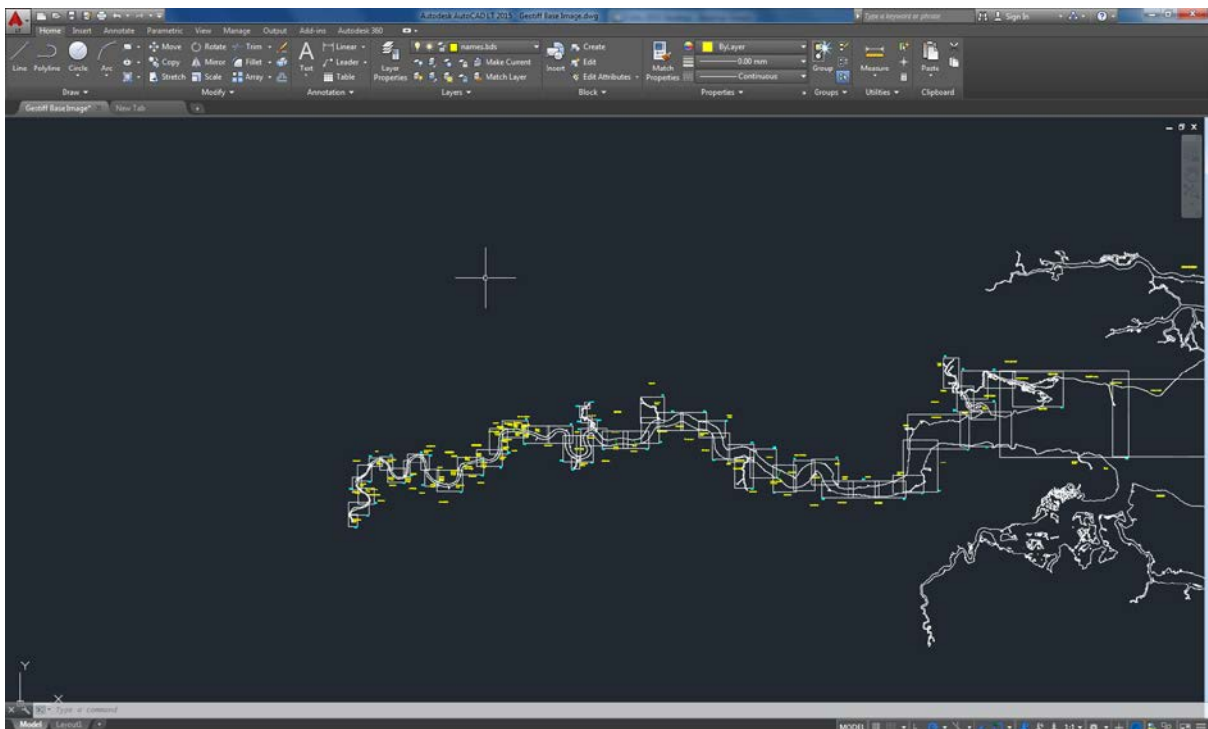
AutoCAD Civil 3D

In AutoCAD Civil 3D you can bring in a geotiff by simply typing the command 'MAPIINSERT' then navigate to your required Geotiff and follow the pop up boxes that occur. Note that the units will be in meters.

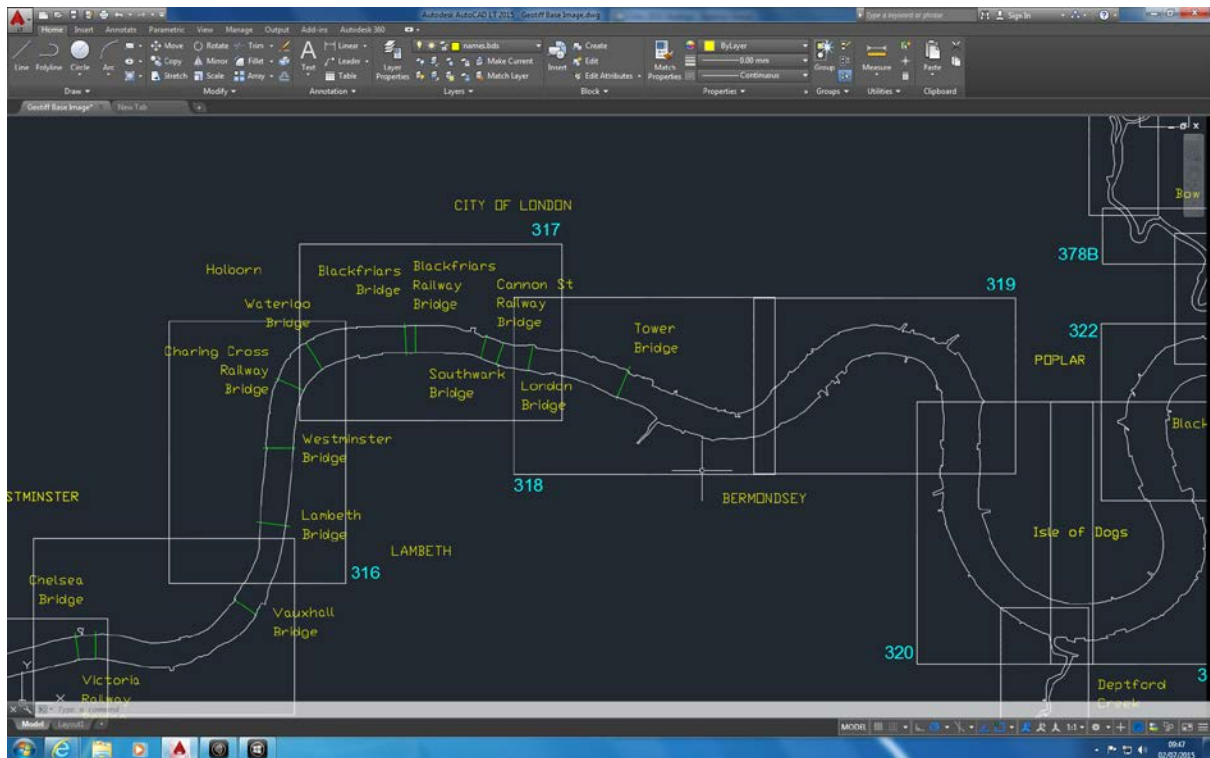
AutoCAD

AutoCAD cannot read Geotiffs directly so below is a work around that allows you to use the geotiffs as a general tiff but then position it in the correct geographic location.

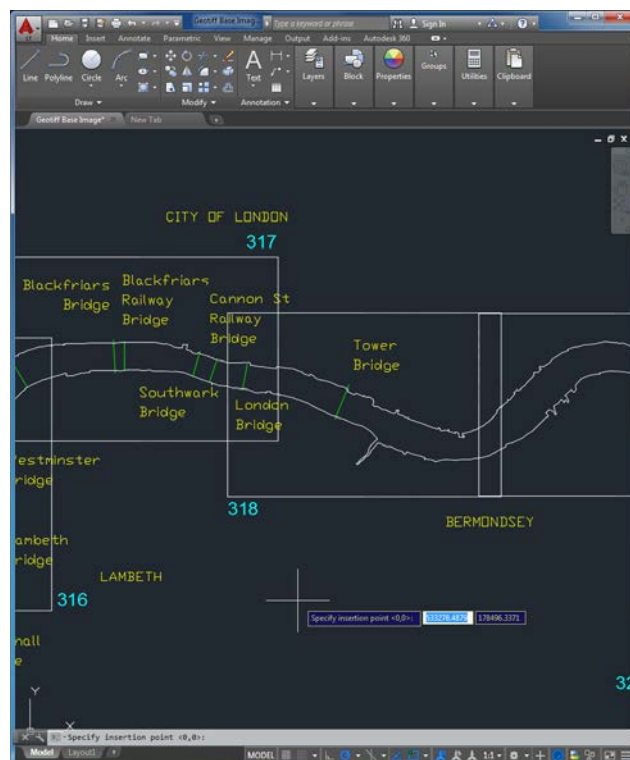
1. Open the Geotiff Base Image DWG file



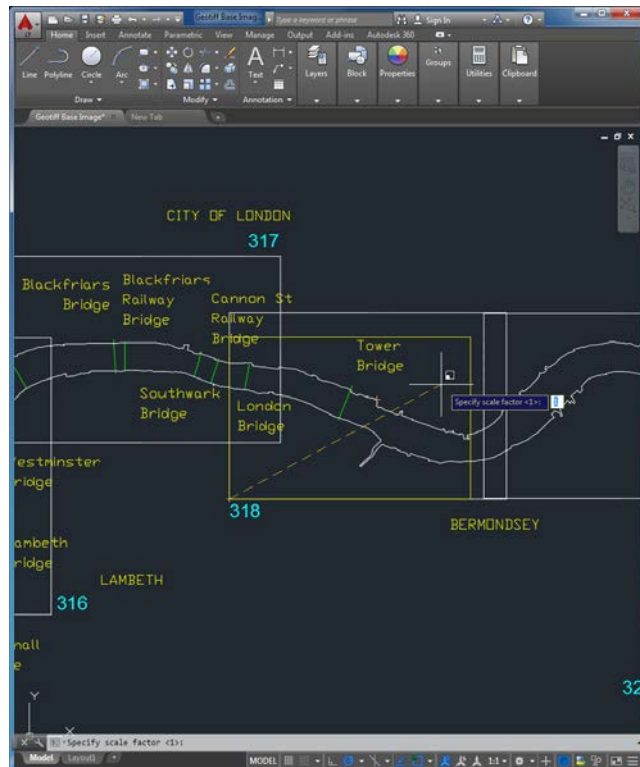
2. Zoom into the area you wish to view your chart



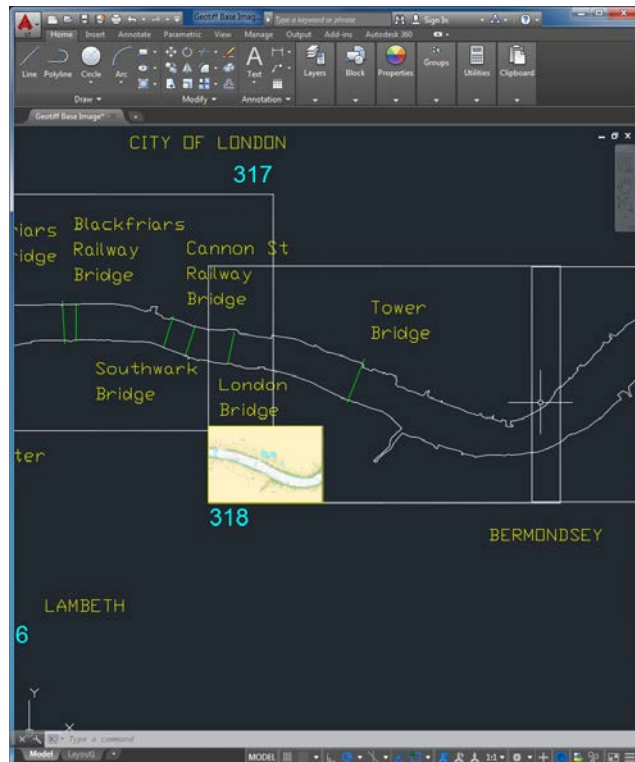
3. Drag and drop the geotiff of the chart wanted from your folder into CAD. You will now be asked to select a starting point for the image.



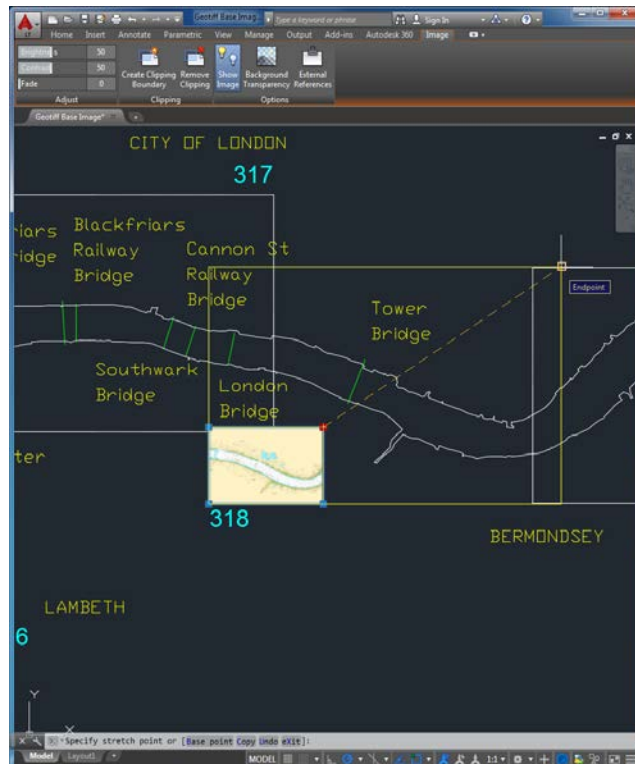
- Now snap to the **Bottom Left** corner of the box that represents your wanted chart area. This will now ask you for a scaling factor



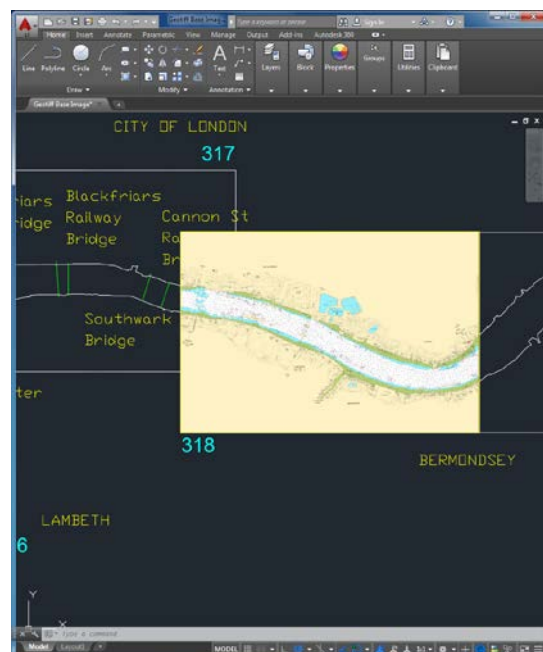
- Just select anywhere as we will be rescaling the image in the next step, you will also be asked to specify a rotation angle which you want to set to 0 (just press enter as 0 is default). Now your image should appear



- Now we need to rescale the image to fit the box. First select the image, now click on the Top Right point (this will allow you to rescale the image) now select the Top Right point of the chart area box



- Your image should now be the correct size and in the correct spatial location



Now you can bring in other CAD drawings rescale and rotate them and create products on PLA charts as well as the drawings being in the correct spatial location. (NOTE: DXF is in meters so drawings should be scaled accordingly)