

THAMES VISION 2050

OUR VISION FOR THE THAMES IN 2050

The UK's leading port, central to the nation's economy, with Net Zero emissions. A clean river, free of pollution and rubbish, supporting more sport, passengers and freight. A resilient Estuary, adapting to climate change and richer in wildlife. A more diverse Thames, providing jobs, learning and enjoyment to the whole community, and always, everyone, staying safe.

DELIVERING FOR PEOPLE AND THE ENVIRONMENT

Thames Vision is built around three interconnected themes, centred on the role the river plays for people and the environment.



Trading Thames



The No. 1 Net Zero UK trading hub

The country's largest and most competitive port, closest to the UK's biggest market, producing Net Zero emissions. Improved connectivity to road and rail infrastructure. Technologically innovative, expanding the transportation of light freight into central London as urban logistics transform.



Destination Thames



A place to live, visit, play and enjoy

Accessible to all, a national and international icon for the city and the country. More visitors, drawn to the river as the best way to enjoy London and the Thames Estuary, and its many cultural attractions. More people from diverse backgrounds enjoying sport and leisure opportunities on the Thames.



Natural Thames



Clean air, water and land supporting diverse wildlife

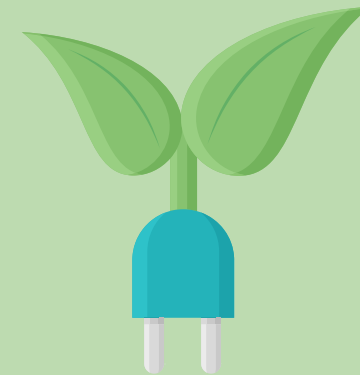
A clean river, free of sewage, waste and other pollution, supporting greater biodiversity and recreational use. Valued for its clean air, natural flood defence, wildlife and as a carbon sink.

A RIVER RESPONSIVE TO CHANGE

The next 25 to 30 years will see substantial change across the economy and society as we transition to a Net Zero society, and deal with the effects of climate change, alongside other opportunities and challenges. With stakeholders, we have agreed five cross cutting priorities for action.

Net Zero

Transforming the Thames economy



Safety

the essential foundation



Access & inclusion

an inclusive river, accessible to all



Resilience

robust systems, infrastructure and habitats



Technological change

improving all aspects of performance



DELIVERING

THE VISION

Between now and 2030, working with partners, we will complete the following actions, to progress towards Thames Vision 2050.



SUPPORTING SUSTAINABLE DEVELOPMENT GOALS

Thames Vision 2050 will deliver against multiple UN Sustainable Developments Goals.



PARTNERS IN THE DELIVERY OF THAMES VISION

Thames Vision 2050 is a shared vision of how the Thames can be a greater resource for local communities and better serve the nation as a global maritime centre. Our partners collaborating in delivering the Vision include Government, the Greater London Authority, port and river businesses, local authorities, the Thames Estuary Growth Board, customers, river users, local community groups, voluntary sector organisations and fellow regulators.



The numerous partners working together on delivery of the Thames Vision include:



ABOUT THE PLA

As a Trust Port, we hold the river in trust, working to hand it on in a better condition to future generations. This approach is at the heart of the Thames Vision.

A not-for-dividend organisation, we retain any financial surplus generated, and are consequently uniquely placed to make targeted, strategic investments to support delivery of the Vision.

Alongside improving the river, our principal responsibility is enabling people to use the tidal Thames safely. We engage actively and openly with stakeholders through a range of forums, throughout the year.



Find out more ...

www.pla.co.uk

